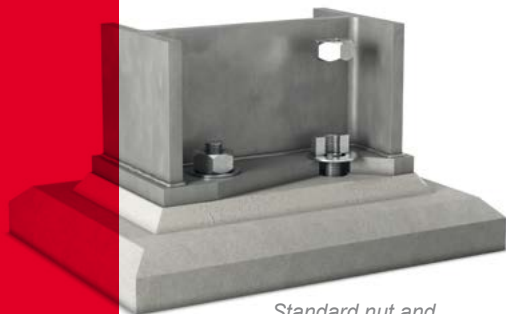




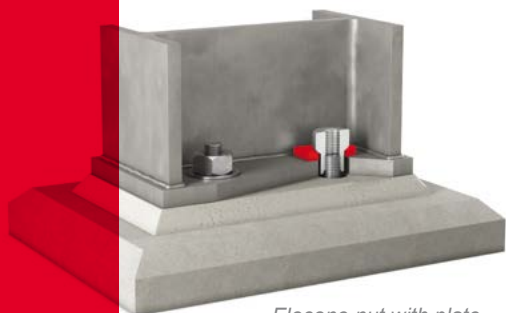
ELOCONE **PLATE WASHERS**

Elocone plate washers are used to provide bearing for the Elocone nut and cover an oversized hole at the base plate.

Made from structural steel, these plate washers have a bevelled hole to accommodate the transition part between the head and the extension of the Elocone nut. In addition to covering an oversized hole, they serve to transfer the uplift loads from the base plates to the Elocone nut.



Standard nut and washer (right) with insufficient anchor rod



Elocone nut with plate washer (right) as a corrective



CANAM
BUILDINGS



Plate washer dimensions

The standard dimensions of the Elocone plate washers follow the minimum recommendations of the *AISC Design Guide 1 - Base Plate and Anchor Rod Design*, second edition, with an adaptation to the unique shape of the Elocone nut. The thicknesses can be increased according to the type of anchor or the needs of the designer. It is the responsibility of the structural engineer to design the plate washer according to the anchor loads.

Plate washer steel: ASTM A572/A572M, $F_y = 345 \text{ MPa}$ (50 ksi)

Elocone plate washer	Description	Weight (lb.)	Elocone nut
HBW-0019	Plate: $\frac{1}{4}$ in. x $2\frac{1}{2}$ in. x $2\frac{1}{2}$ in. large Anchor rod diameter: $\frac{3}{4}$ in.	0.4	HBA-0019, HBA-0023, HBA-0040, HBA-0041
HBW-0024	Plate: $\frac{1}{4}$ in. x $2\frac{1}{2}$ in. x $2\frac{1}{2}$ in. large Anchor rod diameter: $\frac{7}{8}$ in.	0.3	HBA-0024
HBW-0020	Plate: $\frac{3}{8}$ in. x 3 in. x 3 in. large Anchor rod diameter: 1 in.	0.8	HBA-0020, HBA-0042, HBA-0047, HBA-0076
HBW-0027	Plate: $\frac{1}{2}$ in. x 3 in. x 3 in. large Anchor rod diameter: $1\frac{1}{8}$ in.	0.7	HBA-0027
HBW-0021	Plate: $\frac{1}{2}$ in. x 3 in. x 3 in. large Anchor rod diameter: $1\frac{1}{4}$ in.	0.9	HBA-0021, HBA-0025
HBW-0026	Plate: $\frac{1}{2}$ in. x $3\frac{1}{2}$ in. x $3\frac{1}{2}$ in. large Anchor rod diameter: $1\frac{1}{2}$ in.	1.5	HBA-0026
HBW-0022	Plate: $\frac{1}{2}$ in. x $3\frac{1}{2}$ in. x $3\frac{1}{2}$ in. large Anchor rod diameter: $1\frac{3}{8}$ in.	1.2	HBA-0022, HBA-0066
HBW-0049	Plate: $\frac{5}{8}$ in. x 4 in. x 4 in. large Anchor rod diameter: $1\frac{3}{4}$ in.	2.0	HBA-0049, HBA-0062
HBW-0054	Plate: $\frac{3}{4}$ in. x 5 in. x 5 in. large Anchor rod diameter: 2 in.	3.9	HBA-0054

Note: The diameter of the hole in the plate washer is equal to the Elocone extension's outer diameter + $\frac{1}{16}$ in.



1-866-466-8769
canam-construction.com/elocone