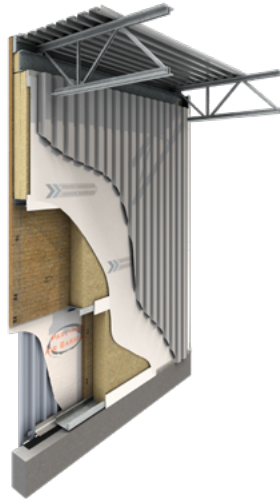




MUROX CI PREFABRICATED PANEL

AQ



DESCRIPTION

Prefabricated wall panel consisting of a galvanized steel structural core with insulated cavity, exterior R-7.6 (RSI-1.34) continuous insulation and prepainted interior and exterior steel cladding. Integrated in the panels, the structural columns are composed of steel C channels up to 12 in. (304.8 mm) of depth. The air/water and vapor barrier membranes are shop-installed and sealing between panels is done on site. The effective thermal resistance value of the wall assembly is R-29.2 (RSI-5.14). Installation can be performed any time of year.

Components

- M-156R or M-2297 prepainted exterior steel cladding (see the Metal Cladding brochure*). Refer to the Murox Technical Manual for other exterior finish options.
- Air barrier, non-woven type 1, air penetration resistance: < 0.004 cfm/ft.² at 1.57 psf (0.01 L/(s·m²) at 75 Pa).
- 2 in. (50 mm) exterior continuous rigid mineral insulation boards with a thermal resistance of R-7.6 (RSI-1.34).
- Structural galvanized steel framed panels.
- 8 in. (203 mm) friction fit mineral insulation batts with a thermal resistance of R-33.6 (RSI-5.92).
- Vapor barrier, polypropylene type 1, permeability: 0.02 perm (1.15 ng/Pa·s·m²).
- M-156R or M-2297 prepainted interior steel cladding (see the Metal Cladding brochure*).

* Barrier™ and Granite® Coastal PVDF series are available according to interior and exterior environments.

Versatile use

- Industrial, commercial and institutional buildings.
- New construction.
- Building expansion.
- Can be supplied with at most a 2-h fire-resistance rating if required by building codes (contact your Canam Representative).
- Buildings where non-combustible construction is required.

Restrictions

Agri-food buildings with food safety standards.

Contact your Canam representative for any question regarding restrictions and options available for your project.

Installation

Erector skills: According to the nature/extent of work required for the project, only a steel erector with a solid experience in assembling steel structures and similar products should be selected for the installation. The erector must meet all requirements, quality standards and installation methods established by Canam.



Technical data

Standard test methods:

- ASTM C1363 — Standard Test Method for Thermal Performance of Building Materials and Envelope Assemblies by Means of a Hot Box Apparatus
- ASTM E2357 — Standard Test Method for Determining Air Leakage Rate of Air Barrier Assemblies
- ASTM E90-09 (2016) — Standard Test Method for Laboratory Measurement of Airborne Sound Transmission Loss of Building Partitions and Elements
- ANSI/UL 263 — Fire Tests of Building Construction and Materials

The Murox CI - AQ panel meets industry criteria to be considered as a pressure-equalized rainscreen wall with continuous insulation.

Table of physical characteristics

Characteristics	Test method	Result
Effective thermal resistance	ASTM C1363	R-29.2 h-ft. ² -F/Btu (RSI-5.14 m ² K/W)
Air leakage	ASTM E2357	Passed
Sound transmission class	ASTM E90-09 (2016)	STC 48, OITC 36
Fire-resistance rating (If required, contact your Canam Representative.)	ANSI/UL 263	2 h with FEO factor (UL Design BXUV.U074)

Product data

Average weight	10 lb./ft. ² (48.82 kg/m ²)
Panel dimensions	Maximum width of 10 ft. (3 m), maximum height of 44.5 ft. (13.6 m)
Column sizes	8 to 12 in. (203 to 304.8 mm)
Transportation	Delivery by standard truck
Ventilated Thermal Panel (VTP)	Can be used with Murox VTP solar collector when fire rating is not required.

Contribution to LEED certification

The Murox CI - AQ prefabricated wall panel can contribute to obtaining the following LEED credits:

- EA (Energy and Atmosphere) Credit 1 for optimization of new or existing building energy performance
- MR (Materials and Resources) Credits 4.1 and 4.2 for content of recycled materials
- MR (Materials and Resources) Credits 5.1 and 5.2 for materials of local or regional origin

All Murox panels are manufactured at our plant in Saint-Gédéon-de-Beauce, Quebec.

For further information, contact your Canam representative.

Quality control

The Saint-Gédéon-de-Beauce plant is ISO 9001:2015, CWB, SJI, AISC and CISC certified.

A strict manufacturing quality control procedure is implemented in our plants, ensuring quality and consistency of the product through several points of strategic control.

For buildings erected by Canam, a certificate of compliance is issued upon completion of building assembly.

CSC and CSI MasterFormat™

13 34 19 – Fabricated Engineered Structures-Steel Building System.

Go to canam-construction.com for product information updates.