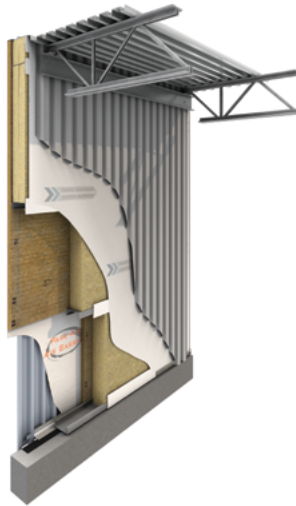




PREFABRICATED PANEL MUROX CI R-25



DESCRIPTION

Prefabricated wall panel consisting of a steel structural core with insulated cavity, exterior R-10 (RSI-1.76) continuous insulation and prepainted interior and exterior steel cladding. Integrated in the panels, the structural columns are composed of steel C channels up to 12 in. (304.8 mm) of depth. The air/water and vapor barrier membranes are shop-installed and sealing between panels is done on site. The effective thermal resistance value of the wall assembly is R-25 (RSI-4.40). Installation can be performed any time of year.

Components

- M-156R or M-2297 prepainted exterior steel cladding (see the Metal Cladding brochure). Refer to the Murox Technical Manual for other exterior finish options.
- Air barrier, non-woven type 1, air penetration resistance: $< 0.004 \text{ cfm/ft.}^2$ at 1.57 psf ($0.01 \text{ L/(s}\cdot\text{m}^2)$ at 75 Pa).
- 2 in. (50 mm) exterior continuous rigid extruded polystyrene insulation boards with a thermal resistance of R-10 (RSI-1.76).
- Structural steel framed panels.
- 6 in. (152 mm) friction fit fiberglass insulation batts with a thermal resistance of R-20 (RSI 3.52).
- Vapor barrier, polypropylene type 1, permeability: 0.02 perm ($1.15 \text{ ng/Pa}\cdot\text{s}\cdot\text{m}^2$).
- M-156R or M-2297 prepainted interior steel cladding (see the Metal Cladding brochure).

Versatile use

- Industrial, commercial and institutional buildings.
- New construction.
- Building expansion.
- Buildings where non-combustible construction is required.

Restrictions

- Refrigerated and agri-food buildings with food safety standards.
- Buildings where exterior walls are required by codes to have a fire-resistance rating.

Contact your Canam representative for any question regarding restrictions and options available for your project.

Installation

Erector skills: According to the nature/extent of work required for the project, only a steel erector with a solid experience in assembling steel structures and similar products should be selected for the installation. The erector must meet all requirements, quality standards and installation methods established by Canam.



Technical data

Standard test methods:

- ASTM C1363 — Standard Test Method for Thermal Performance of Building Materials and Envelope Assemblies by Means of a Hot Box Apparatus
- ASTM E2357 — Standard Test Method for Determining Air Leakage Rate of Air Barrier Assemblies
- ASTM E90 — Standard Test Method for Laboratory Measurement of Airborne Sound Transmission Loss of Building Partitions and Elements

The Murox CI - R-25 panel meets industry criteria to be considered as a pressure-equalized rainscreen wall with continuous insulation.

Table of physical characteristics

Characteristics	Test method	Result
Effective thermal resistance	ASTM C1363	R-25 h-ft. ² -F/Btu (RSI-4.40 m ² K/W)
Air leakage	ASTM E2357	Passed
Sound transmission class	ASTM E90	38 STC

Product data

Average weight	7 lb./ft. ² (34.25 kg/m ²)
Panel dimensions	Maximum width of 10 ft. (3 m), maximum height of 44.5 ft. (13.6 m)
Column sizes	6 to 12 in. (152 to 304.8 mm)
Transportation	Delivery by standard truck
Ventilated Thermal Panel (VTP)	Can be used with a Murox VTP solar collector

Contribution to LEED certification

The Murox CI - R-25 prefabricated wall panel can contribute to obtaining the following LEED credits:

- EA (Energy and Atmosphere) Credit 1 for optimization of new or existing building energy performance
- MR (Materials and Resources) Credits 4.1 and 4.2 for content of recycled materials
- MR (Materials and Resources) Credits 5.1 and 5.2 for materials of local or regional origin

All Murox panels are manufactured at our plant in Saint-Gédéon-de-Beauce, Quebec.
For further information, contact your Canam representative.

Quality control

The Saint-Gédéon-de-Beauce plant is ISO 9001:2000, CWB, SJI, AISC and CISC certified.

A strict manufacturing quality control procedure is implemented in our plants, ensuring quality and consistency of the product through several points of strategic control.

For buildings erected by Canam, a certificate of compliance is issued upon completion of building assembly.

CSC and CSI MasterFormat™

13 34 19 – Fabricated Engineered Structures-Steel Building System.

Go to canam-construction.com for product information updates.