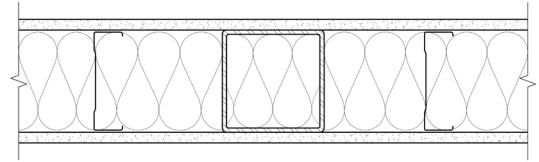


Canam fire-resistance rated load-bearing wall assemblies

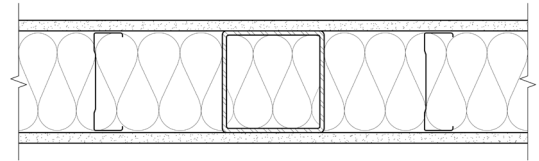
LISTINGS FOR 1 HOUR INTERIOR WALL

Base listing	U425
Gypsum board type	1 layer 5/8" type X each side
Min Stud depth	3-1/2 in
Furring	Optional
Insulation	Optional
Steel Column	Unwrapped HSS M/D 52,7
Load factor	100%



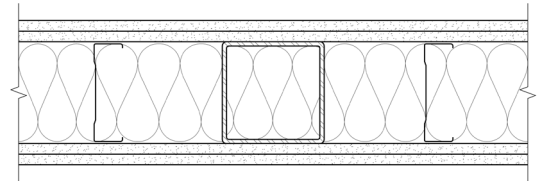
EXTERIOR WALL

Base listing	U423
Interior gypsum board type	1 layer 5/8" type X
Min Stud depth	3-1/2 in
Furring	Optional
Insulation	Optional
Steel Column	Unwrapped HSS M/D 52,7
Load factor	100%
Exterior sheathing type	1 layer 5/8" type X
Outside material	Code meeting material



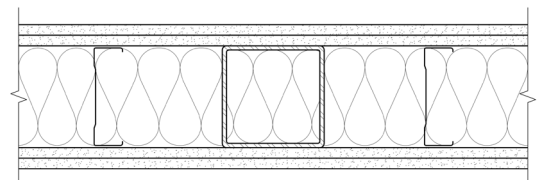
LISTINGS FOR 2 HOURS INTERIOR WALL

Base listing	U423
Gypsum board type	2 layers 5/8" type X each side
Min Stud depth	3-1/2 in
Furring	Optional
Insulation	Mandatory
Steel Column	Unwrapped HSS M/D 87,7
Load factor	100%



EXTERIOR WALL

Base listing	U423
Interior gypsum board type	2 layers 5/8" type X
Min Stud depth	3-1/2 in
Furring	Optional
Insulation	Mandatory
Steel Column	Unwrapped HSS M/D 87,7
Load factor	100%
Exterior sheathing type	2 layers 5/8" type X
Outside material	Code meeting material



1 866 466-8769

www.canam-construction.com